



## *St. Helena Fire Safe Council*

Presentation to St. Helena City Council

January 25, 2022

Chris Warner [chrisjwarner52@gmail.com](mailto:chrisjwarner52@gmail.com)

Jeff Farmer [jfarmer@seedgrain.com](mailto:jfarmer@seedgrain.com)

[Home - Napa Communities Firewise Foundation \(napafirewise.org\)](http://napafirewise.org)

# *St. Helena Fire Safe Council*

## **Introduction and Contact Info**

- Chris Warner [chrisjwarner52@gmail.com](mailto:chrisjwarner52@gmail.com) 415-309-9572
- Jeff Farmer [jfarmer@seedgrain.com](mailto:jfarmer@seedgrain.com) 707-227-8371

## **Who We Are**

- Voluntary residents and businesses in St. Helena dedicated to supporting wildfire prevention and emergency preparedness in coordination with St. Helena, Napa and CalFire wildfire, emergency response and public outreach experts and leaders
- Tax exempt non-profit association affiliated with Napa Communities Firewise Foundation as fiscal sponsor
- Close collaboration with other Napa Fire Safe Councils including Spring Mountain, Diamond Mountain, Calistoga, Deer Park and Angwin FSCs
- Strongly support community and social services organizations such as COAD, Rianda House

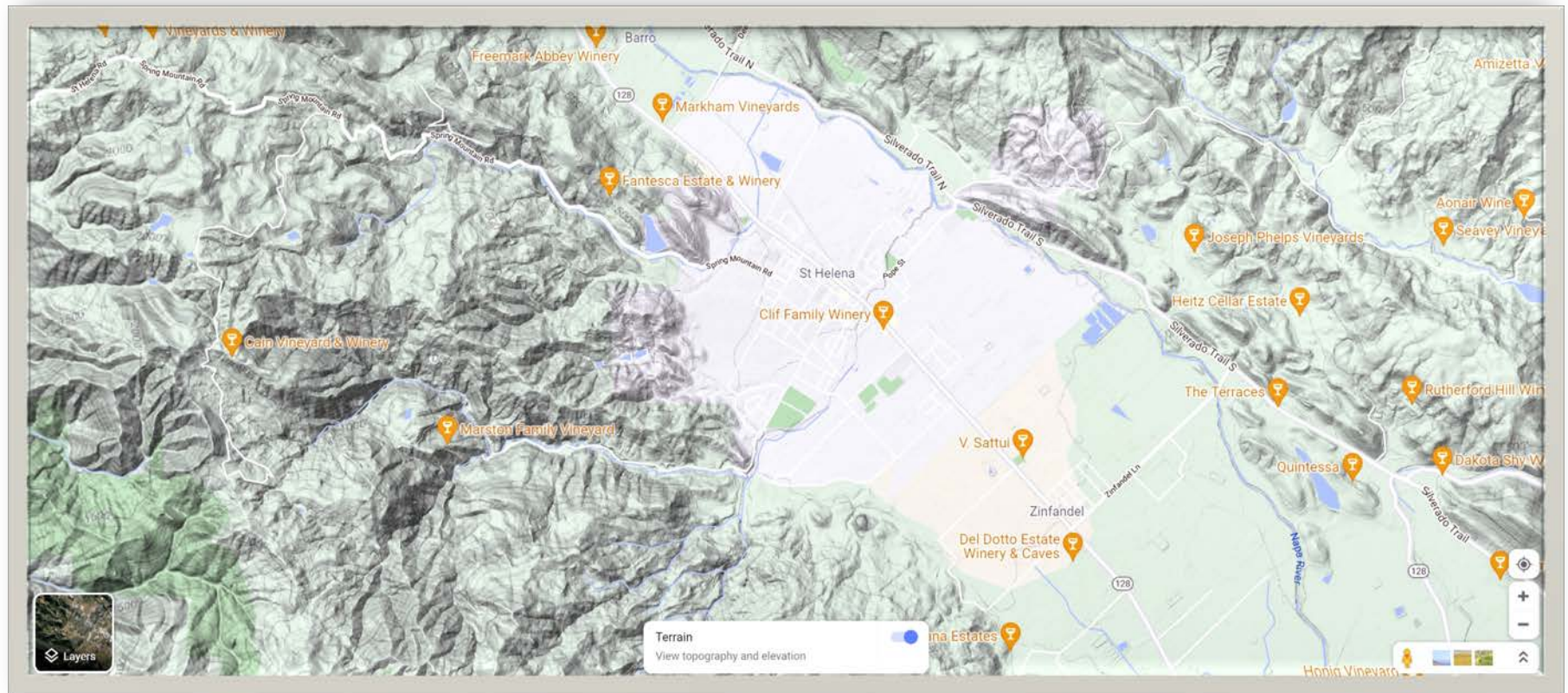
## *What We Do*

- **Community outreach and education on wildfire prevention and wildfire emergency preparedness**
- **Support wildfire prevention and preparedness programs and initiatives by City of St. Helena, St. Helena Fire and Police Departments, Napa Communities Firewise Foundation, Napa County Fire Department, CalFire, Napa Flood Control District, neighborhood associations and businesses**
- **Perform and update Community Wildfire Risk Evaluation and issue Community Wildfire Protection Plan**
- **Support and administer funding for residential defensible space projects in St. Helena**
- **Help access and vulnerable needs residents (inc. fixed income, low income, seniors, assisted living) obtain support to stay safe and prepare for and evacuate during wildfire emergencies**

# *St. Helena FSC 2022 Activities – Challenges and Opportunities*

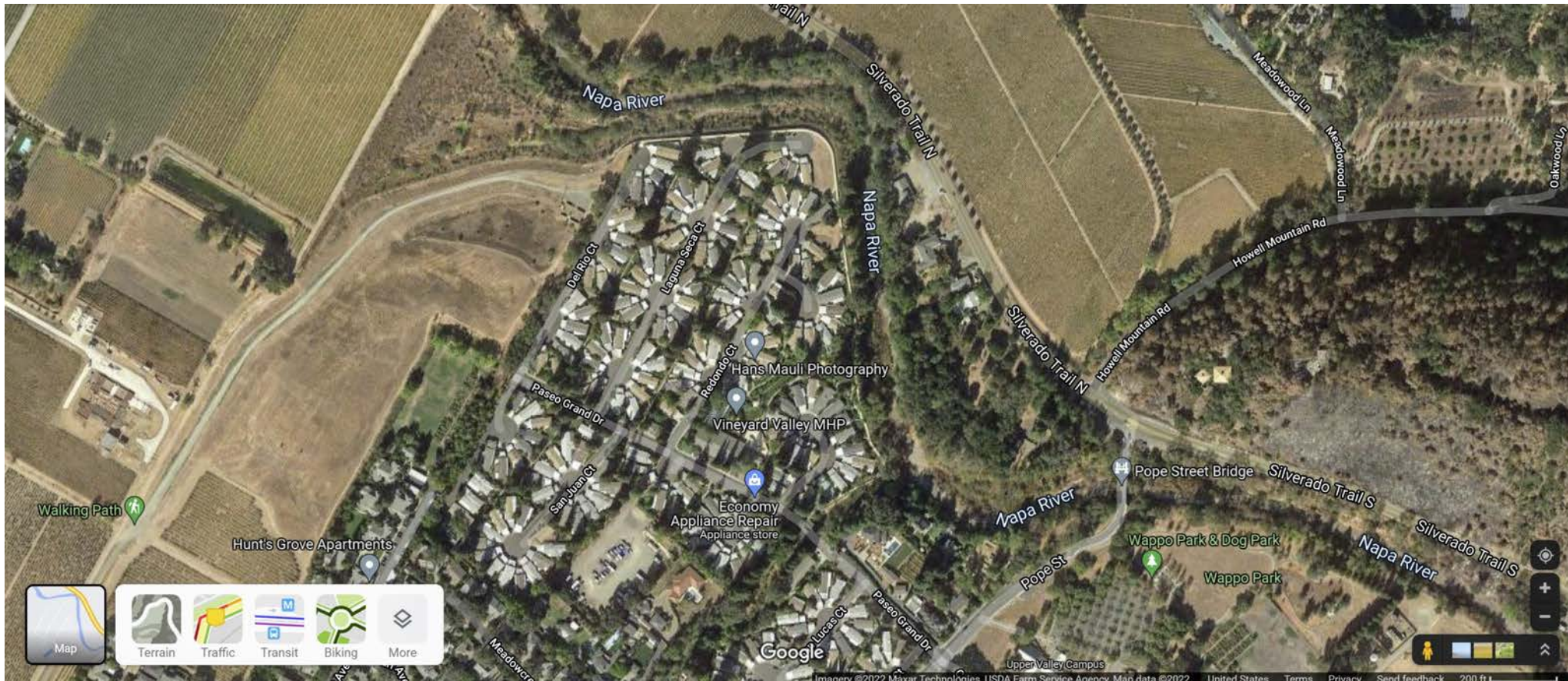
- As the Glass Fire After-Action Report demonstrates, the wildfire risks to St. Helena residents remain extremely high, particularly on east, west and northern edges of the city and along Sulphur Creek through the center of the city.
  - Map 1: City of St. Helena terrain surrounded by wildfire risk on all sides, and through Sulphur Creek
  - Maps 2 and 3: Napa River side of St. Helena – approx. 1,000 vulnerable residents exposed to ember attack across Silverado Trail and along the river and Sulphur Creek
  - Maps 4 and 5: Residents on west and north sides of St. Helena, especially Sylvaner Avenue, Spring St./White Sulphur Springs, Sulphur Springs Avenue, and Spring Mountain Road, remain highly vulnerable to wildfires similar to Glass Fire in parts of hills not thinned by wildfires in nearly 100 years
  - Sulphur Creek runs through center of town from west to east into Napa River
- Wildfire risks outside of St. Helena, including in the eastern and western hills and north and south of St. Helena in the Valley remain high and make the entire St. Helena and Napa County economy extremely vulnerable to damage, lost jobs, reduced tax revenues and disruption of daily life

# Map 1: City of St. Helena Terrain



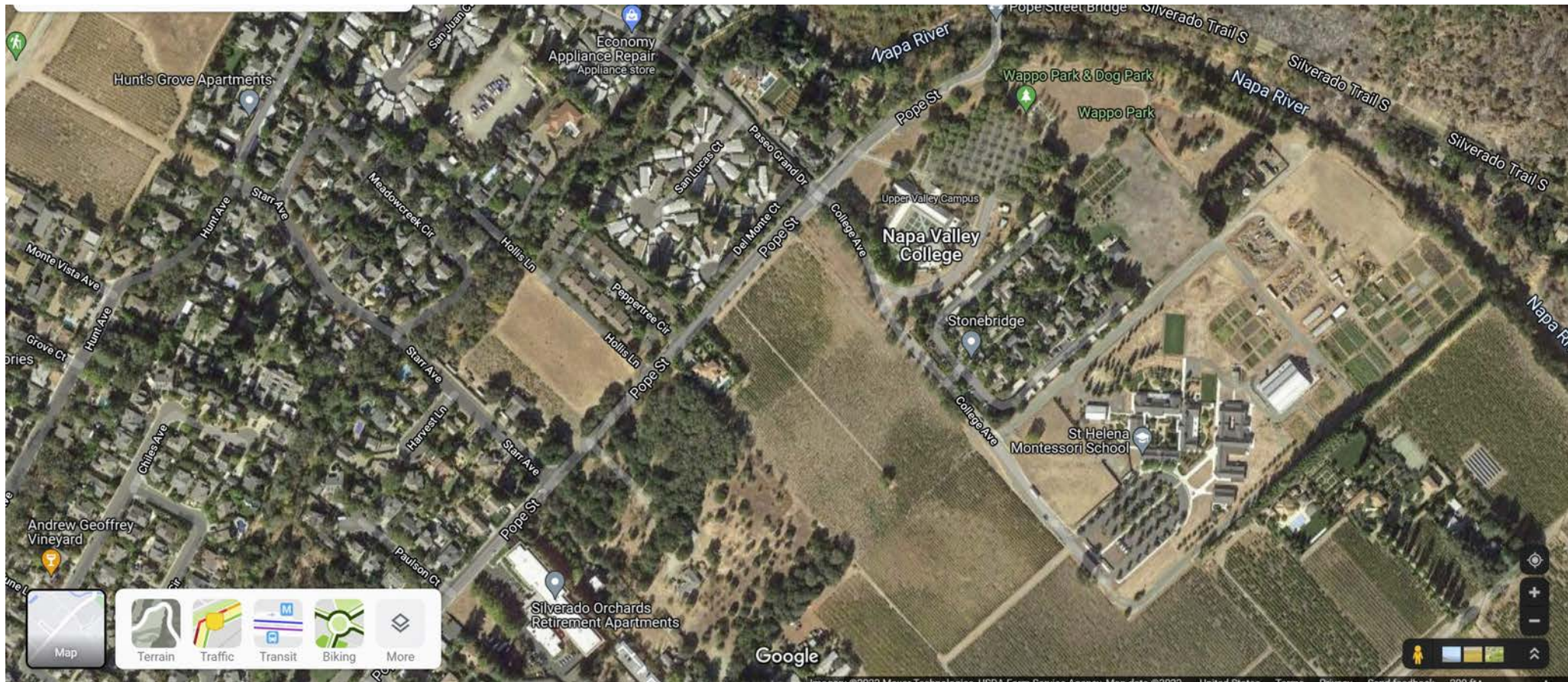


## Map 2: Napa River – East Side of St. Helena





## Map 3: Napa River – East Side of St. Helena



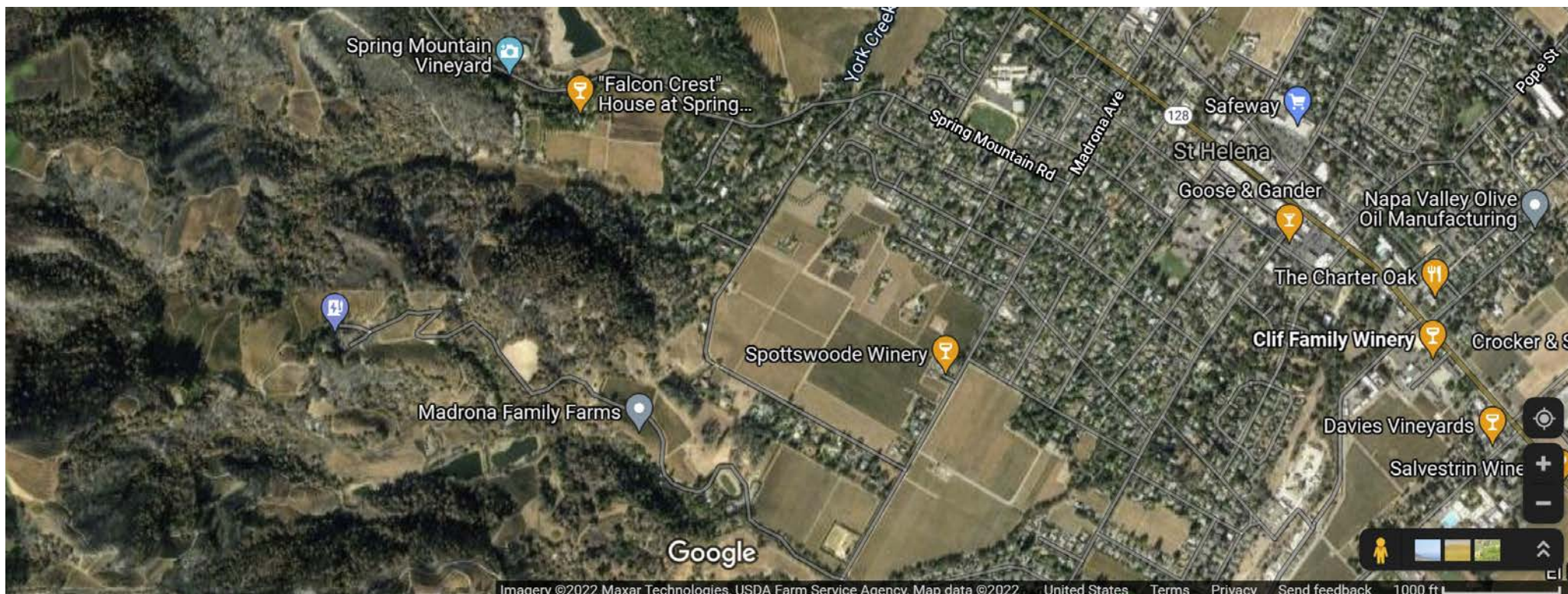


## Map 4: West Side of St. Helena (Sylvaner, Spring St., White Sulphur Springs)





## *Map 5: North Side of St. Helena (Fir Hill Trail, Dean York, Spring Mountain Road)*



## *St. Helena FSC 2022 Actions Planned*

- **Public education and person-to-person assistance on defensible space and emergency preparedness, including requirements of Napa County and local defensible space ordinances**
- **Support implementation of Napa Communities Firewise Foundation Defensible Space Cost Share program (\$2,000 per property) and Sen. Dodd Holiday Fundraiser funds**
- **Support and help provide staff for emergency preparedness and evacuation drills for tenants and fixed income residents on east side of city bordered by Napa River (Vineyard Valley, Stonebridge, Woodbridge, Huntsgrove)**
- **Obtain public input and issue St Helena FSC Wildfire Community Risk Evaluation**
- **Support and assist St. Helena Fire Department, Napa Communities Firewise Foundation, other Upvalley FSCs, Napa County, and St. Helena neighborhood associations in raising funds and implementing local and neighborhood wildfire prevention projects**
- **Support COAD and other social services agencies helping special needs and vulnerable residents in preparing for wildfire emergencies and keeping safe**



# *Key Lessons Learned for Wildfire Safety in St. Helena*



- Every St. Helena resident is scared to death of wildfires and each has their own personal experiences from the 2017 and 2020 wildfires that they never want to live through again
- Every St. Helena resident and business is looking for expert advice on what they and their neighbors can do to protect themselves from wildfires and help prevent wildfires
- Doing everything we can do now to prevent wildfires is cheaper and more effective than waiting to respond to the next wildfire – both wildfire prevention and wildfire response need everyone's full support
- No matter where we live in the Valley, everyone benefits from wildfire prevention and preparedness because the damages to property, life and the economy caused by wildfires know no boundaries
- Our wildfire experts and emergency responders cannot do it alone; they need help from every citizen and every elected official to overcome the extreme challenges and risks of wildfires caused by climate change and a century of unthinned forest growth
- Wildfire prevention is not discretionary nor a "once and done" effort; it will take many years, multi-millions in funding, and expedited approvals from multiple agencies. Saying "no" to needed sustained funding and agency permits and approvals is not an option. Lives and jobs in the Valley depend on everyone saying "Yes."

***Thank you for allowing us to speak to you today.  
Please feel free to ask any questions and follow up  
with us with suggestions and comments. We need  
your help!***

***Chris and Jeff***

***St. Helena Fire Safe Council***

**[chrisjwarner52@gmail.com](mailto:chrisjwarner52@gmail.com)**

**[jfarmer@seedgrain.com](mailto:jfarmer@seedgrain.com)**