

- Hardening Your Home
- Creating Defensible Space

# Calistoga

## Hardening Your Home Basics

What IS Required For Fire



Defensible Space Removes The Fuel

## The Wind

### Where the wind begins

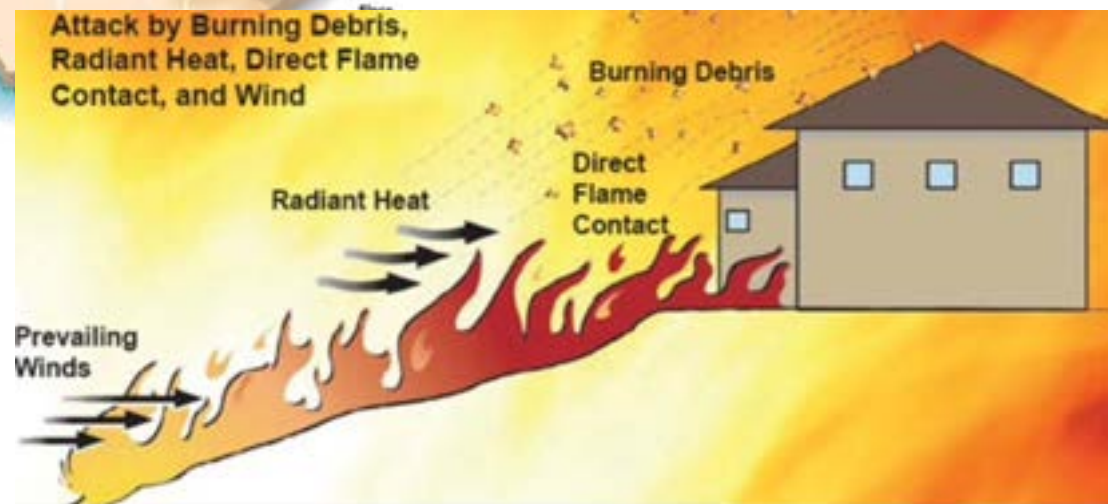
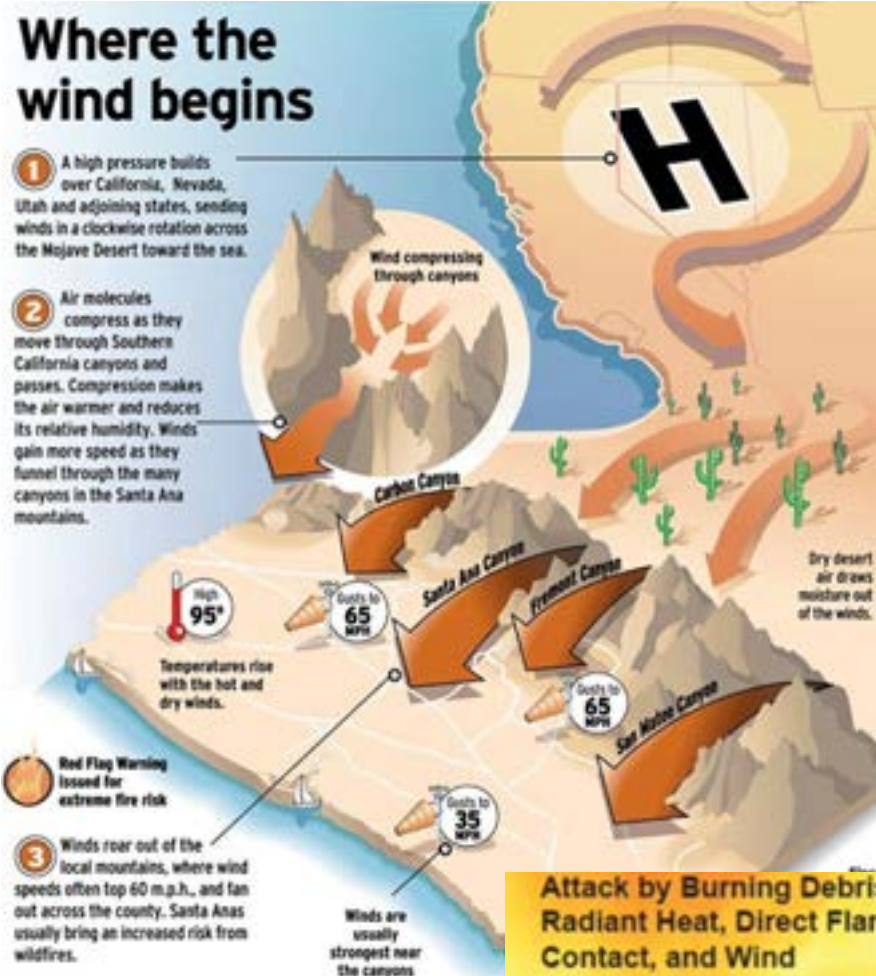
1 A high pressure builds over California, Nevada, Utah and adjoining states, sending winds in a clockwise rotation across the Mojave Desert toward the sea.

2 Air molecules compress as they move through Southern California canyons and passes. Compression makes the air warmer and reduces its relative humidity. Winds gain more speed as they funnel through the many canyons in the Santa Ana mountains.

Red Flag Warning issued for extreme fire risk

3 Winds roar out of the local mountains, where wind speeds often top 60 m.p.h., and fan out across the county. Santa Anas usually bring an increased risk from wildfires.

Source: National Weather Service  
Graphic by Scott Brown / The Register





BE  
EMBER  
AWARE!

Will Your Home Survive When The Embers Arrive?

What  
Embers Look  
Like





This Is Not  
What We Are  
Talking About

---



This Is



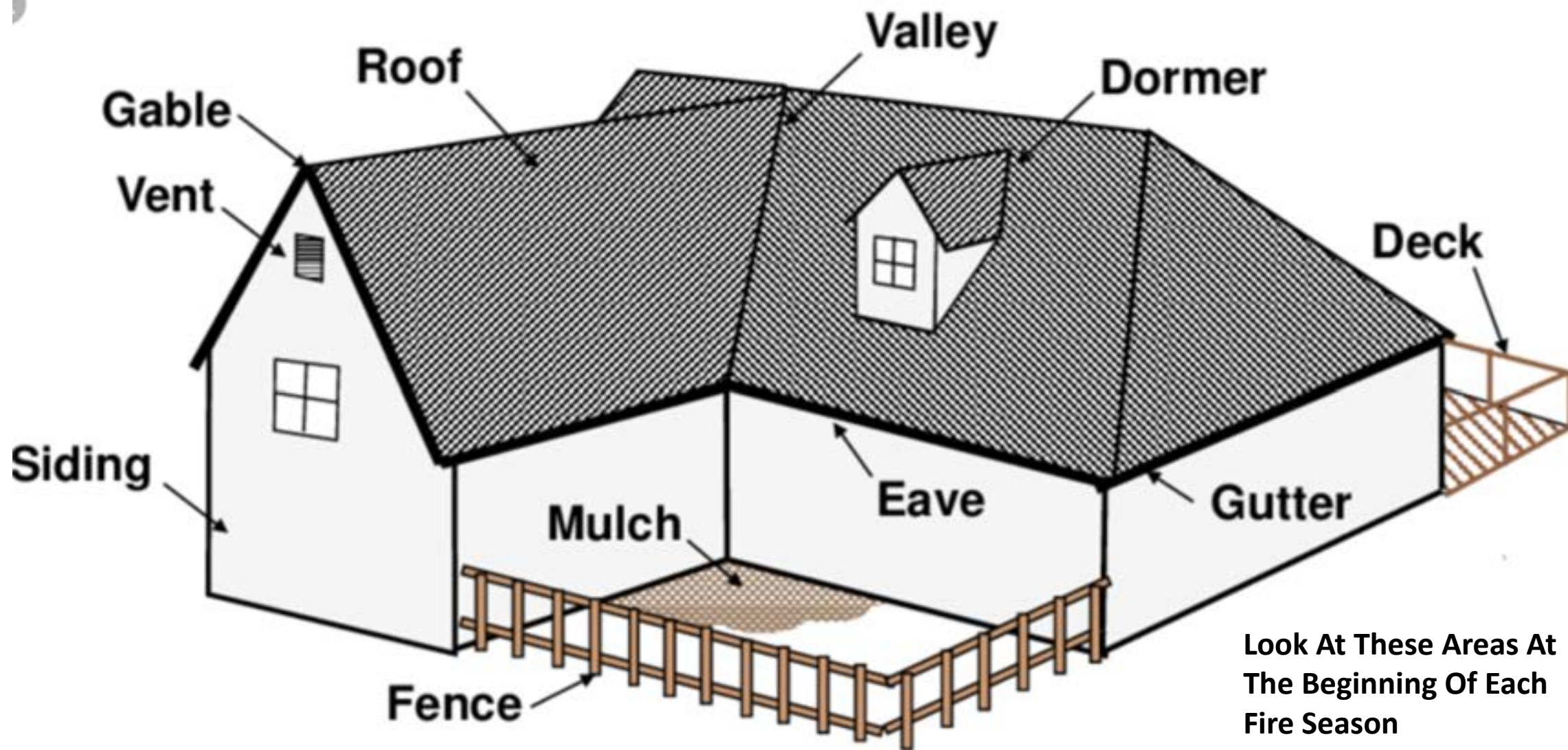
...And This Is What Happens













# Real Life Applications

Areas Like This Attract Debris

And This Can  
Happen

---





# Beauty Bark Is A Big No-No

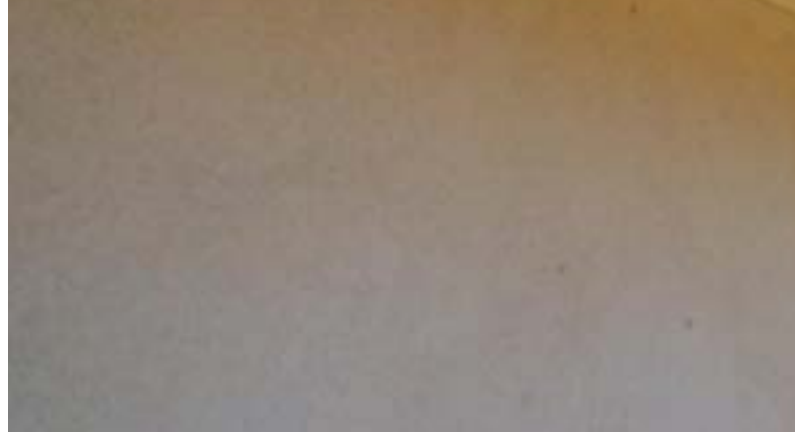
---



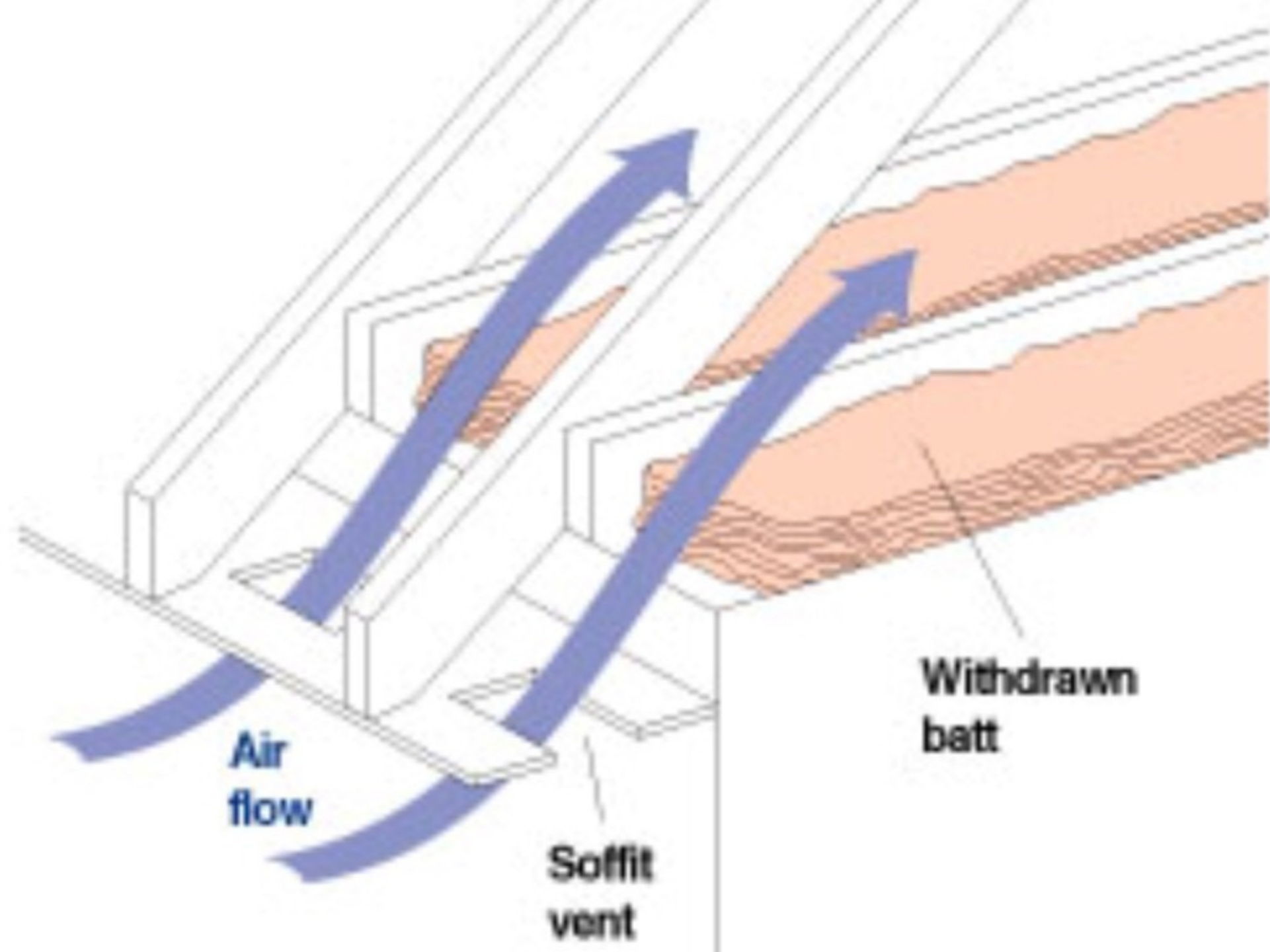
# Where Fire Gets In

---

Eaves







Attic Vent



Crawl Space





Enclosing the underside of projections with ignition resistant products will help reduce the likelihood of fire starting in these areas. See Figure 8 below for examples on how to properly protect the underside of the projections. In the example photos, the horizontal surface is constructed with cement board as would commonly be used for soffit and fascia material.

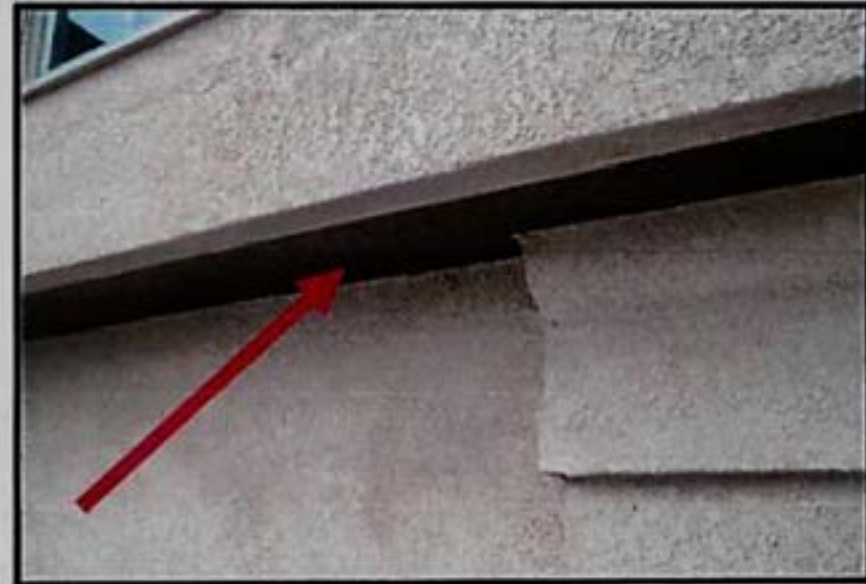


Figure 8

# Gutters

---



# Other Vulnerabilities

---



## Wood Fences

- Are the perfect “ladder fuel”
- “Fences are the ‘wick, to your home”



# Decks & Fences

---

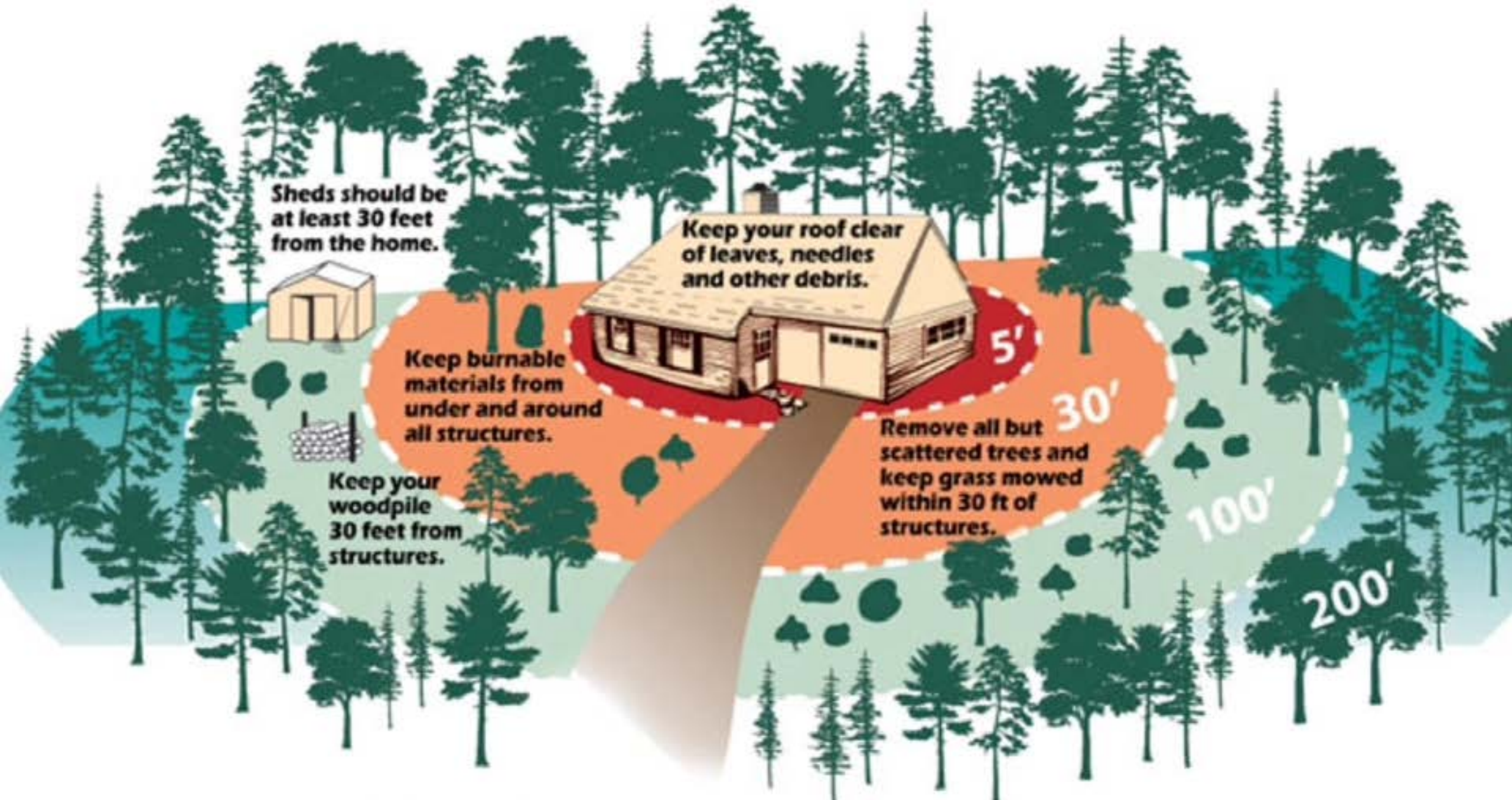


# The Perfect Set Up

---







Sheds should be at least 30 feet from the home.



Keep your roof clear of leaves, needles and other debris.

Keep burnable materials from under and around all structures.



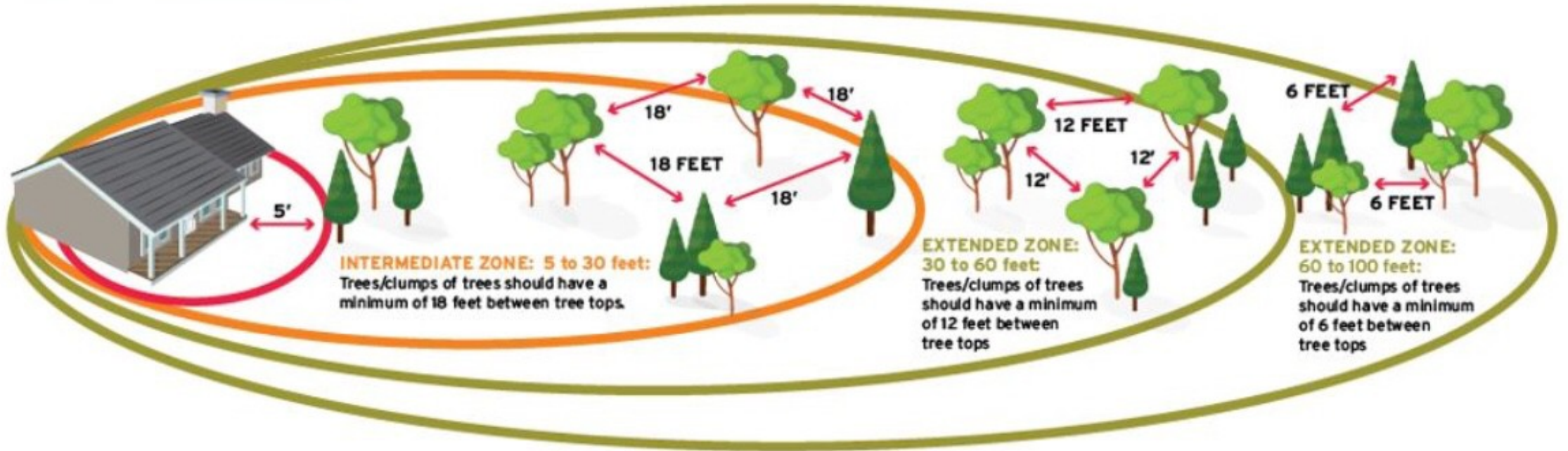
Keep your woodpile 30 feet from structures.

Remove all but scattered trees and keep grass mowed within 30 ft of structures.

# The Home Ignition Zone

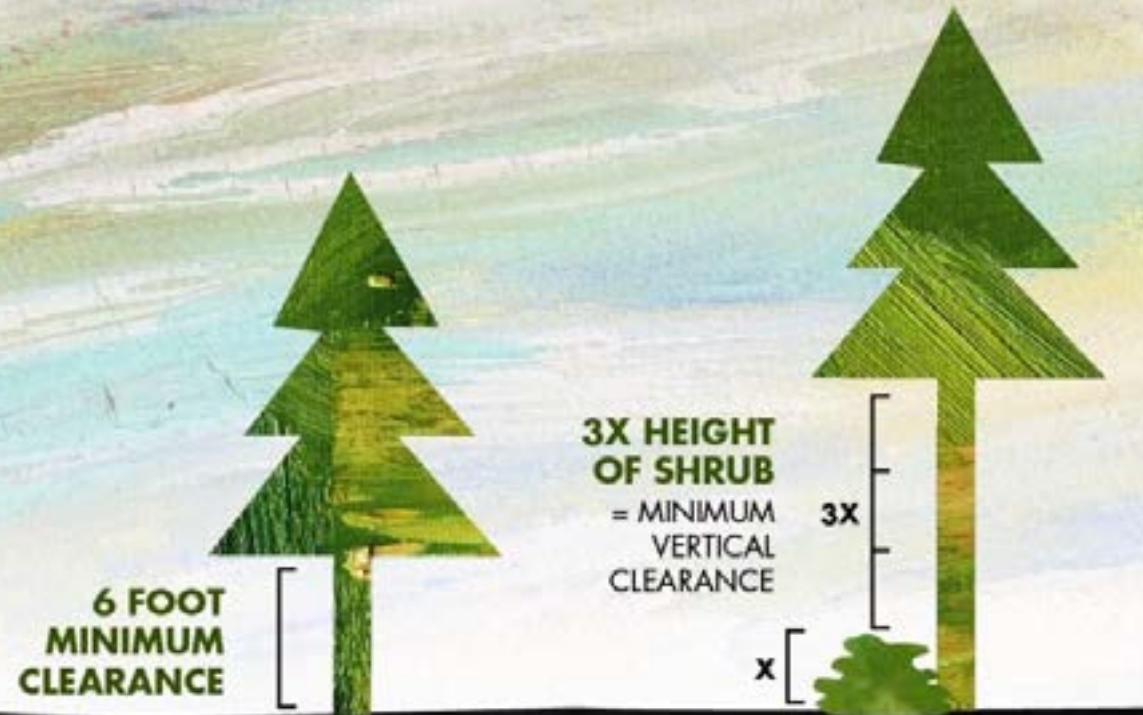


## TREE SPACING



Landscaping – the goal here is to interrupt fire’s path and keep flames smaller and on the ground, photo by National Fire Protection Association

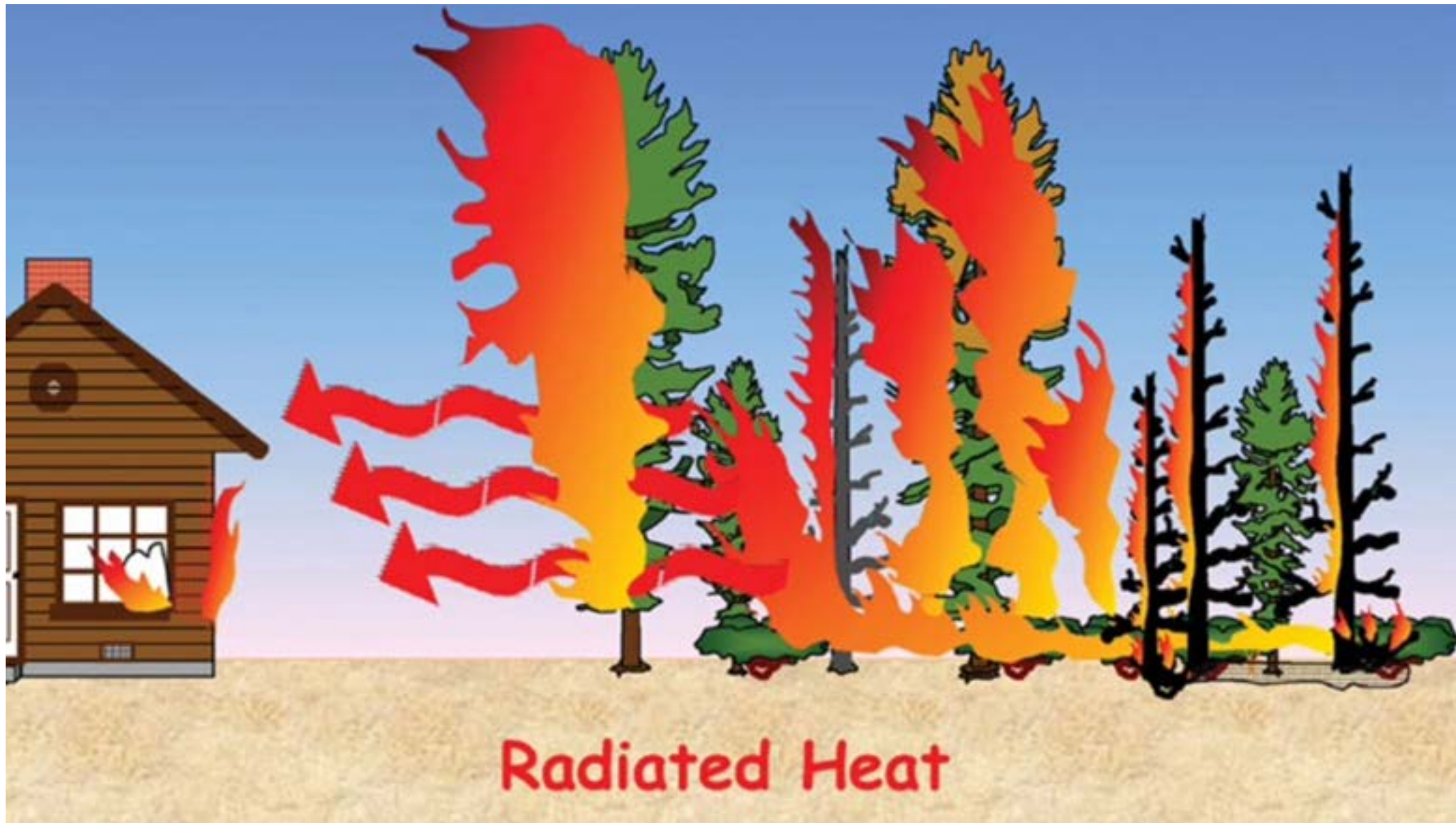
# TAKE CHARGE OF YOUR DEFENSIBLE SPACE BY **LIMBING YOUR TREES**



**THE SPACING BETWEEN GRASS,  
SHRUBS, AND TREES IS CRUCIAL TO  
REDUCE THE SPREAD OF WILDFIRES.**







Radiated Heat

## Prescriptive Burn





## Fire Resistant Plants

- Store water in leaves & stems
- Grow slowly & produce minimal litter
- Contain low levels of volatile substances

Penstemon



Lupine



California lilac



## DO

- Create defensible space around your home
- Use native drought-tolerant plants for landscaping
- Provide adequate space between plants (vertical & horizontal)

California buckeye



Yarrow



Pacific madrone



## Flammable Plants

- Produce dry vegetation
- Grow rapidly & produce a lot of litter
- Contain high levels of volatile substances

Broom (French, Scotch, Spanish)



Pampas grass



Periwinkle



## do NOT

- Allow flammable matter to collect around your home
- Use invasive species or other flammable species for landscaping
- Overcrowd plants within 100 feet of your home

Cedar



Acacia



Rosemary



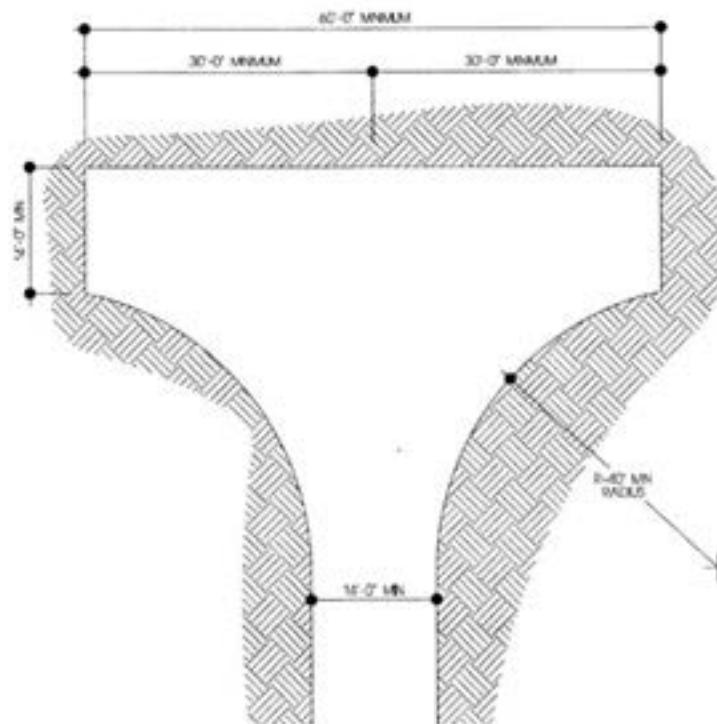
It Makes A  
Difference





We need room!





HAMMERHEAD TURNAROUND

RESIDENTIAL DRIVEWAY

- ✦ 10 feet minimum driveway width and 2 feet of shoulder on each side = 14 feet total width required

HAMMERHEAD TURNAROUND		FIRE SAFE STANDARDS	
<b>CAL FIRE</b> Imperial County Fire Department 1000 W. 10th Street San Marcos, California 92078 OFFICE PHONE (760) 947-4444 FAX (760) 947-4444		1/4" = 1'-0"	<b>12</b>
		SCALE	
		---	
		REVISION DATE	DRAWING NO. 11