

# WILDFIRE PREPAREDNESS

---

June 24, 2020

---



# PRESENTATION OUTLINE

---

- FISCAL IMPACTS (COVID-19) ON THE CITY OF CALISTOGA FIRE PREPAREDNESS
- HOW ARE WE BETTER PREPARED FOR 2020?
- PG&E PUBLIC SAFETY POWER SHUTOFFS: UPDATE

# COVID-19 FISCAL IMPACT TO CITY BUDGET

---

## **City Impacts:**

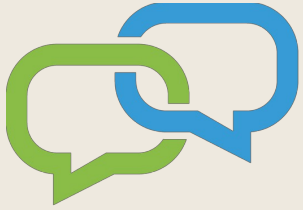
- \$4.4 million of unrealized revenues (TOT & sales tax)
- All city departments and services impacted
  - Public Safety (FD & PD) impacts were mitigated because of fire season
    - This action was made possible because of strong budget reserves accumulated over the past few years



HOW ARE WE PREPARED?

# ALERT SYSTEMS & COMMUNICATIONS

---



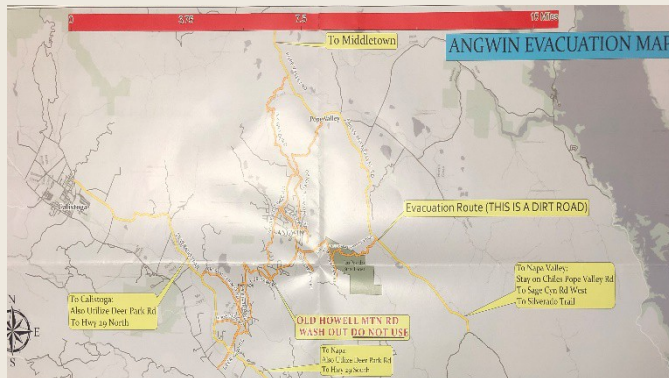
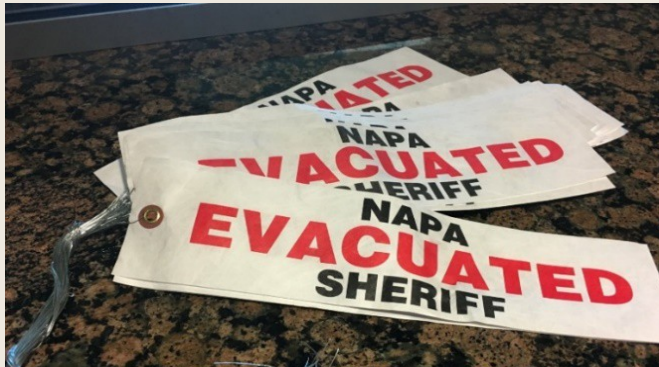
- Over **150,000+** new subscribers!
- Implemented standard Nixle messages that are pre-translated
- Federal system allowing County to send alerts to all cellphones within a geographic area (IPAWS)
- Other sources include: radio, television, computer, home phone, sirens, and public signage
- New video conferencing equipment
- Allows every City/Town & the County to have direct communication with the EOC during an emergency

# HEAR SIREN.....

## TURN ON THE RADIO & CELL PHONE



- The Vine 920 AM or 92.3 FM
- KVON 1440 AM or 96.9 FM



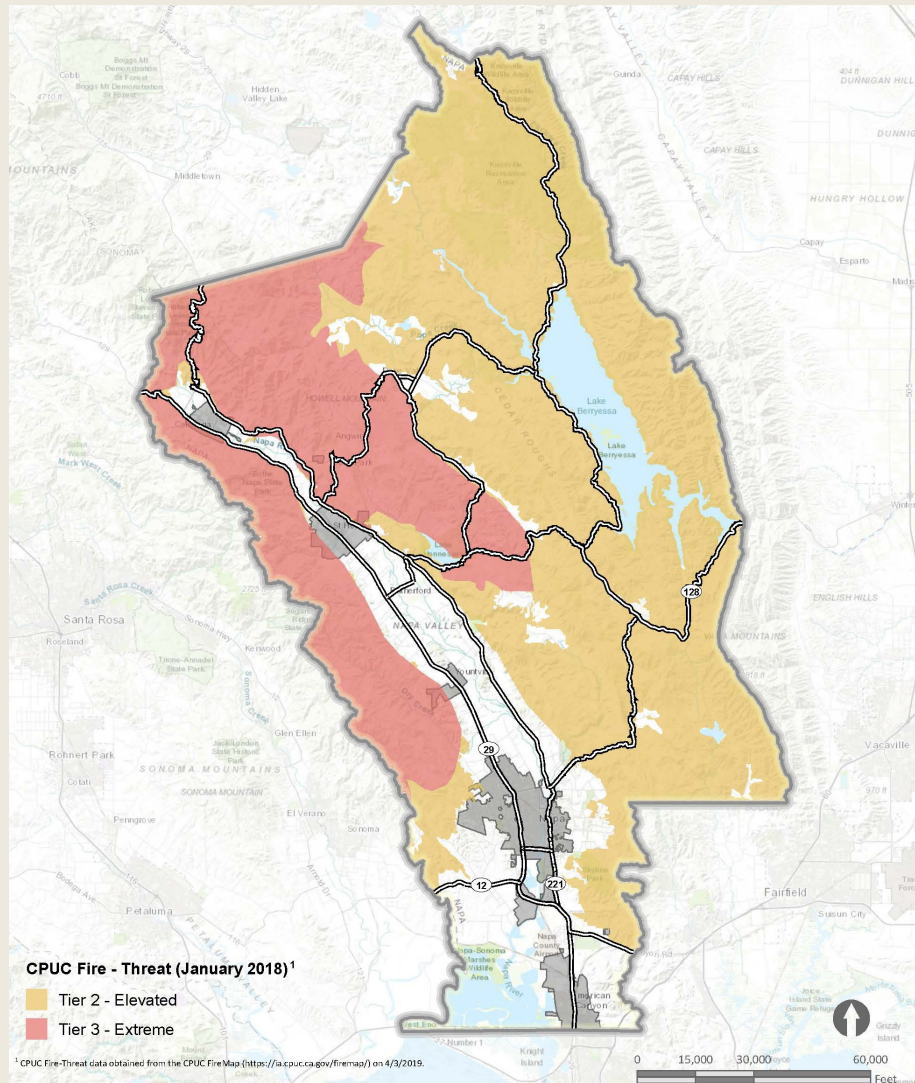


# PG&E

## PUBLIC SAFETY POWER SHUTOFFS



# PUBLIC SAFETY POWER SHUTOFFS (PSPS)



## CPUC Fire Threat

Napa County Operational Area: Electrical System De-Energization Response Plan

4/3/2019 Disclaimer: This map was prepared for informational purposes only. No liability is assumed for the accuracy of the data delineated herein.



## ► Potentially Impacted Areas

- **Tier 2 (Elevated) & Tier 3 (Extreme):**  
The most likely electric lines to be considered for PSPS will be those passing through these areas (includes distribution & transmission lines)
- Power may also be shut off if a community (not in a fire-threat area) relies upon a line that passes through Tier 2 or 3
- This means any customer receiving electric service from PG&E should be prepared for a possible PSPS



# Key Learnings from PG&E PSPS

---

## **Communication is Critical**

- When is the “switch” being thrown?
- What/Where is impacted?
- How long will service be “interrupted” (completely shut down)?
- Where do people go who have medical device issues?

## **Localized Power Generation is Critical**

- PIH (plug-n-play) station for Calistoga currently under construction at end of Washington Street (near bike path and little league field)
- Generator solution for Rancho de Calistoga being developed through partnership between City and park ownership
- Individual generators pose a dangerous threat to public safety.



QUESTIONS?